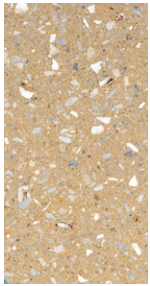


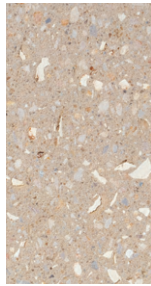
# Hanover® Chesapeake Collection | COLORS

Hanover® Prest Pavers and Asphalt Block have been infused with clam shells to create the Chesapeake Collection. A range of coastal inspired colors is available, as well as multiple sizes and a variety of textures. The addition of recycled clam shells boosts the recycled content of the paver. Percentage of recycled content is based on the recycled materials used and varies for each color.

## Chesapeake Collection Prest® Paver Colors Ground Tudor®



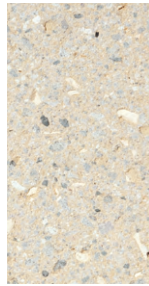
Matrix #2988



Matrix #3009



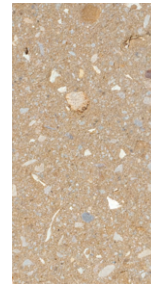
Matrix #3370



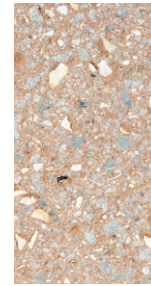
Matrix #3371



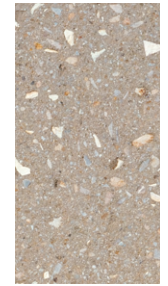
Matrix #3372



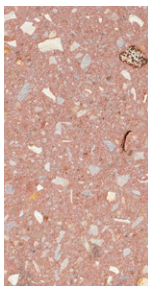
Matrix #3373



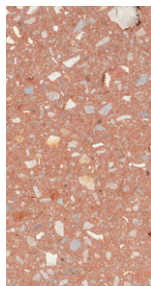
Matrix #3374



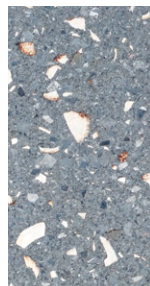
Matrix #3375



Matrix #3376



Matrix #3377



Matrix #3378

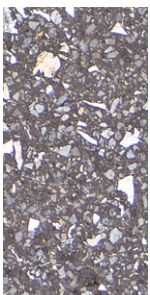


Matrix #3379

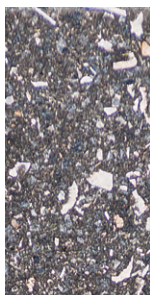
## Chesapeake Collection Asphalt Block Colors

The colors shown below are part of Hanover's Chesapeake Collection. Asphalt Block are infused with clam shells, increasing the recycled content. A wide range of sizes and thicknesses is available.

Percentage of recycled content is shown beneath each color.



A80044  
Ground Finish  
36.3%



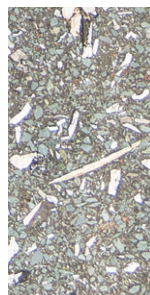
A80044  
Ground Tudor®  
Finish  
36.3%



A80045  
Ground Finish  
36.3%



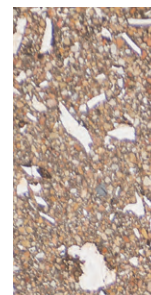
A80045  
Ground Tudor®  
Finish  
36.3%



A80046  
Ground Finish  
36.3%



A80046  
Ground Tudor®  
Finish  
36.3%



A80047  
Ground Finish  
36.3%



A80047  
Ground Tudor®  
Finish  
36.3%

**PLEASE NOTE FOR ALL ASPHALT BLOCK:** In order to prevent a premature natural oxidation effect, the top layer of Asphalt Block is packaged face down. Color will naturally lighten/brighten with exposure to UV light. This will allow all blocks to lighten/brighten at the same rate, creating a more uniform appearance.

**PLEASE NOTE:** Additional custom blending is available on special order when quantities permit. The color photos shown were prepared with great concern for accuracy. However, it is suggested that actual samples be requested before specifying. Due to the natural variance of the raw materials used, products can be expected to differ slightly from sample to actual product. It is recommended that the products be cleaned after the installation is finished. Contact our representatives for product suggestions.