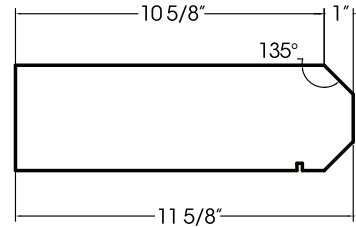


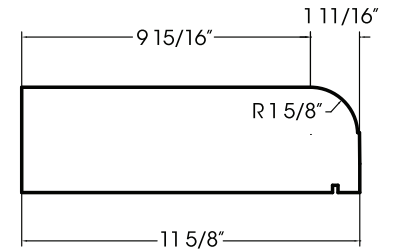
PROFILE A



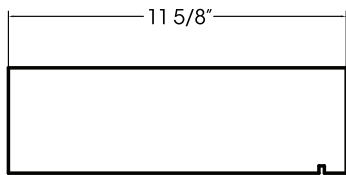
PROFILE B



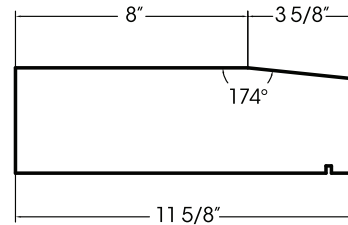
PROFILE C



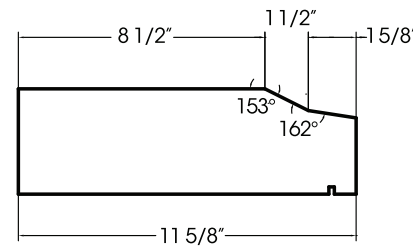
PROFILE D



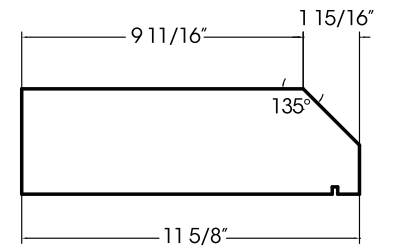
PROFILE E



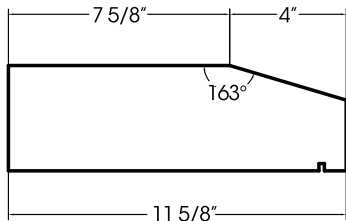
PROFILE F



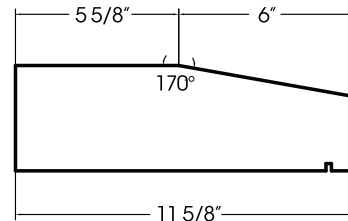
PROFILE G



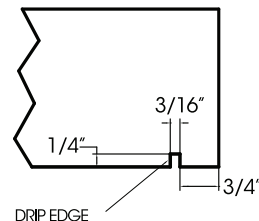
PROFILE H



PROFILE I



PROFILE J



OPTIONAL DRIP EDGE

- Sills are available in lengths of 23 5/8" or 35 5/8".
- Sills with a length of 23 5/8" have a height of 3 5/8".
- Sills with a length of 35 5/8" are available in heights ranging from 3 5/8" to 5 5/8".
- Drip Edge is optional for any profile
- Sills are available in the same colors as Reconstructed Stone™ Masonry and Wall Panels

HANOVER[®]
Architectural Products

5000 Hanover Road
Hanover, PA 17331
800.426.4242
info@hanoverpavers.com
www.hanoverpavers.com

DESIGNED		SCALE: 1"=1'	PRODUCT:
DETAILED	J.L.F.	DATE: 2/16/17	Reconstructed Stone™ Sills
TRACED		PCS:--	
CHECKED		DWG. NO: 1 of 1	
APPROVED		LOCATION: HANOVER	
*LENGTH AND WIDTH DIMENSIONS ARE MADE WITH A TOLERANCE OF +/- 1/16" THICKNESS AND HEIGHT DIMENSIONS ARE MADE WITH A TOLERANCE OF +/- 1/8" *DIMENSIONS SHOWN ARE NOMINAL. PRODUCTS ARE MADE TO FIT METRIC MODULES.			