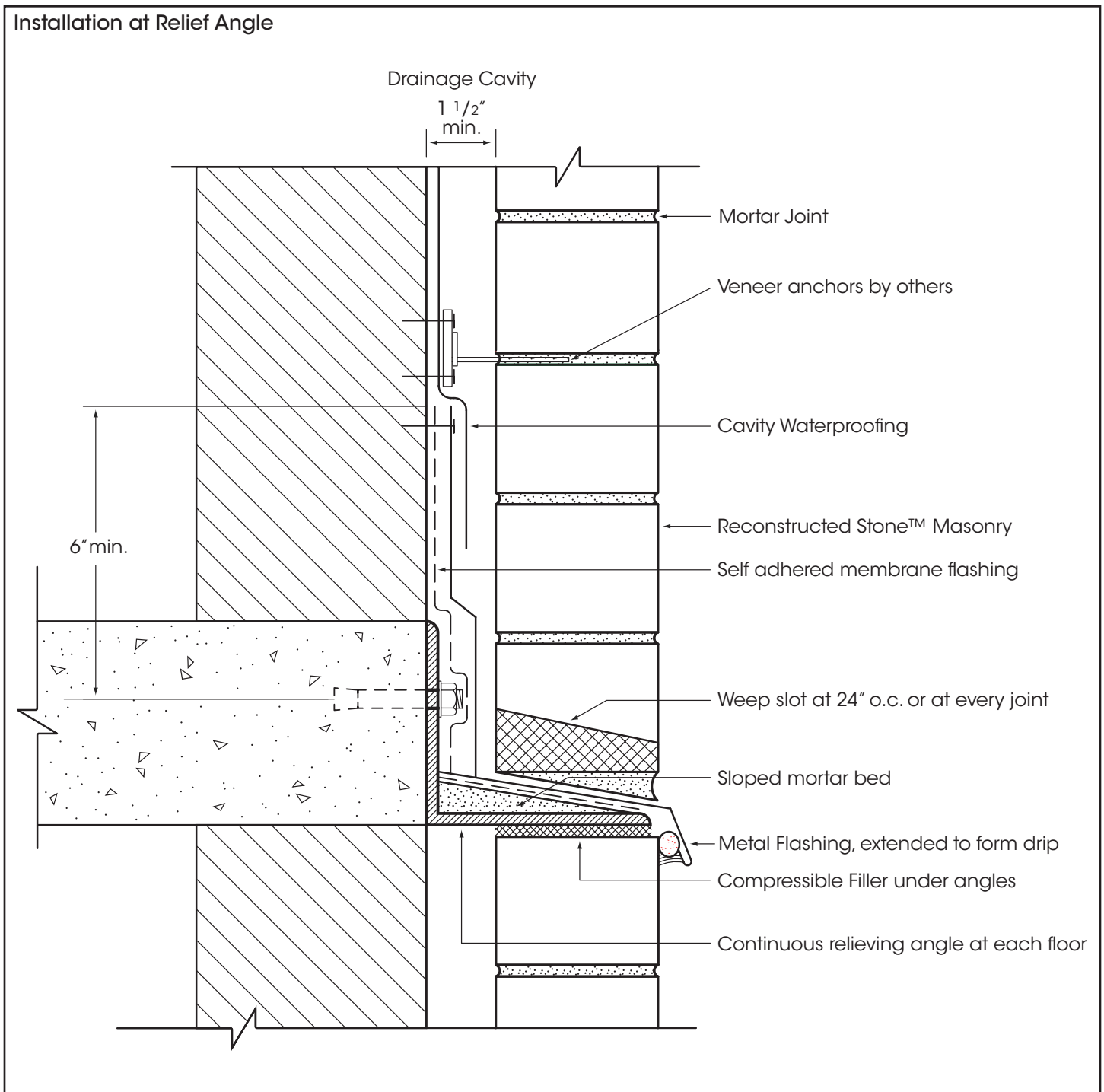


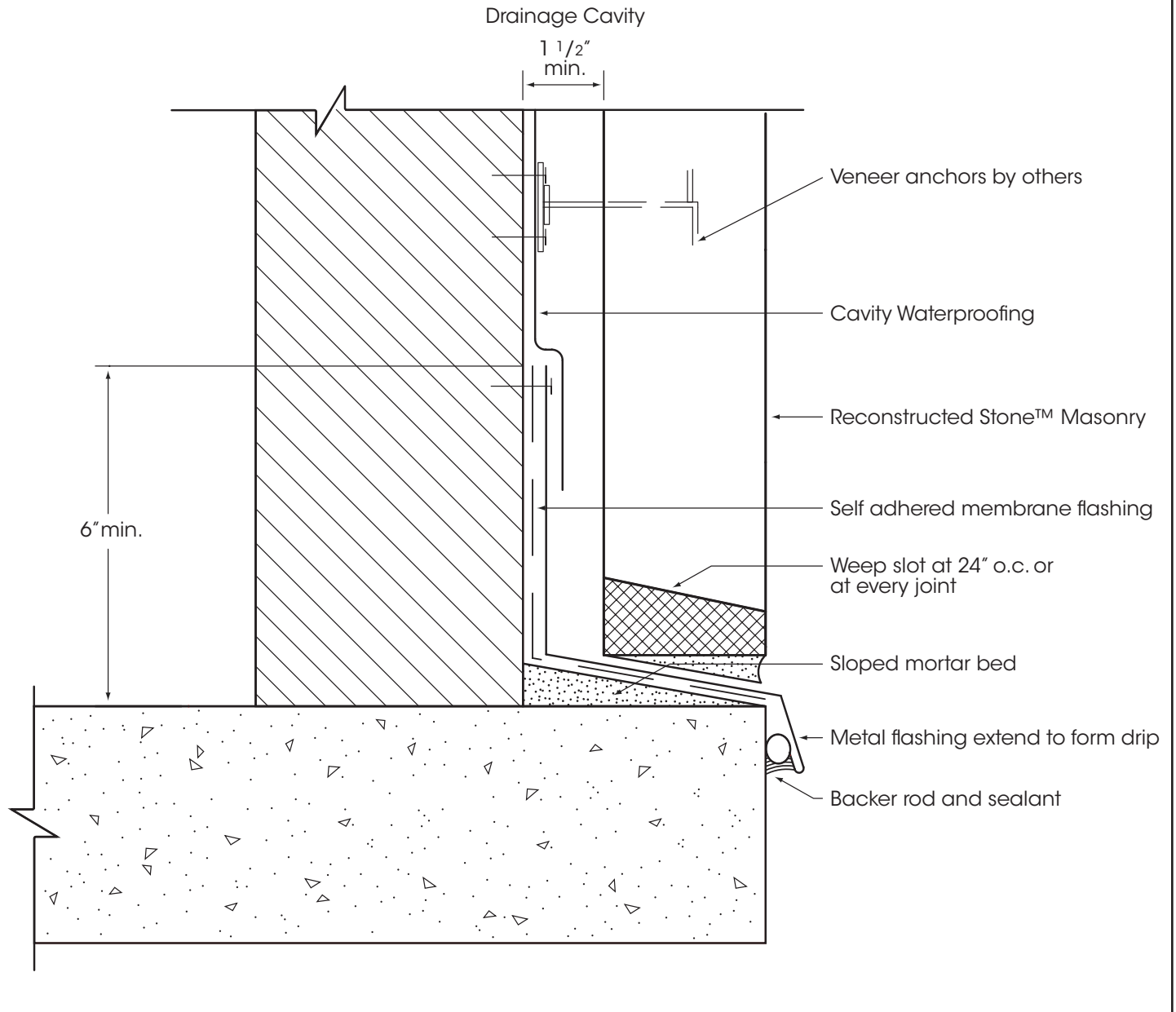
Vertical Walling Detail

Reconstructed Stone™ Masonry

Reconstructed Stone™ Masonry can be installed using standard masonry practices. These drawings illustrate a fundamental understanding of the conditions at both the relief angle and foundation. Vertical waterproofing, thru-wall flashings, and tie back details should be designed by the building engineer to meet specific project requirements.



Installation at Foundation



HANOVER[®]
Architectural Products
5000 Hanover Road, Hanover, PA 17331
717.637.0500 fax 717.637.7145
www.hanoverpavers.com